

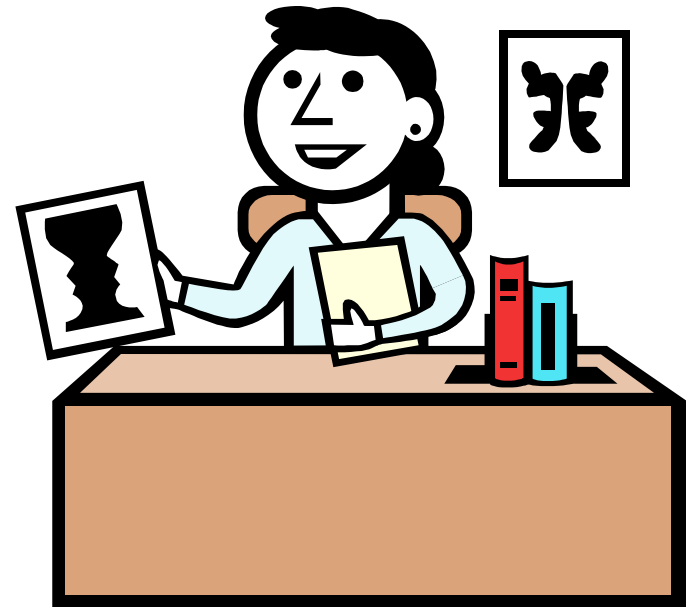


# The College Application Process

BHS COUNSELING OFFICE  
PRESENTATION  
2018-2019

# Counseling Office Staff

- ▶ **Rhonda Renn- Registrar**
- ▶ **Jill Wilton-  
Secretary/Transcript  
Requests**
- ▶ **Terri Tuckey- Counselor  
A-F**
- ▶ **Mrs. Garris-  
Counselor G-O**
- ▶ **Rhonda Starmer-  
Counselor P-Z**



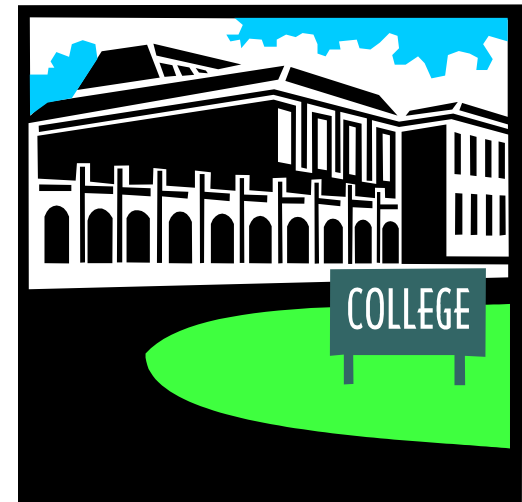


# Agenda

- ▶ **Review College Selection Resources**
- ▶ **Review Points to Consider in the College Selection Process**
- ▶ **Orientation to Naviance Transcript Request Procedure**
- ▶ **Highlight Senior Year College Preparation Calendar**
- ▶ **Q & A**
- ▶ **\*\* This presentation will be on our BHS website**

# College Selection Resources

- ▶ **Naviance**
- ▶ **College Websites**
- ▶ **College Representatives**
- ▶ **College Fairs**
- ▶ **Visitations and Interviews**



# Points to Consider:

- ▶ Quality of schedule
- ▶ Grade point average
- ▶ SAT I/ ACT scores (where accepted)
- ▶ SAT II's (when required)

# Points to Consider:

- ▶ Student Credentials
- ▶ Teacher Recommendations
- ▶ Counselor Recommendation
- ▶ Essay (s)

# How Many Applications Are Enough?



- ▶ Apply to 1-2 dream schools
- ▶ Apply to 3-4 “realistic” schools which will likely accept you and which you would be happy to attend.
- ▶ Apply to at least one “safety” school which you know will accept you, which you will be happy to attend and which has an early notification date

# College Visits at BHS

- ▶ Always visit the college/university when school is in session
- ▶ Do an overnight visit, if you can
- ▶ Meet with college reps at BHS: Sign up on Naviance
- ▶ Attend College Fairs (FCC, Baltimore National, Washington National)
- ▶ Check Naviance “College Visits” to see which colleges will be visiting BHS and register and print out your registration confirmation to meet with the College Admissions Representative.



# College Application Terms

- ▶ **Early Decision** -- An option that allows you to apply early (usually in November) to your clear, first-choice college. You pledge to attend if accepted. If you're a competitive candidate, you stand a statistically better chance to be admitted under Early Decision.
- ▶ **Early Action** -- Similar to Early Decision in timing (November due date for applications) but nonbinding. If accepted, you do not have to enroll and you may take until May 1 to decide. Early Action is fading in its popularity due to the move by colleges to seek an enrollment commitment from their applicants. Acceptance percentage is higher than that of regular-decision pool.
- ▶ **Rolling Admissions:** Students' applications are considered when all required credentials have been submitted. There is either no deadline or a very late deadline; qualified students are accepted until classes are filled. Applicants are notified of admission continuously throughout the enrollment period.

# The Transcript Process & Procedures

Colleges and universities strongly encourage students to apply online via [Commonapp.org](http://Commonapp.org) or on the college/universities application. Check Common App first as that may cut down the # of applications you need to complete but watch for “extra” essays



# Requesting Transcripts

- ▶ You must add at least one college/university to the “Colleges I’m applying to” list in order to:
- ▶ Complete the FERPA
- ▶ Match your Common App account with Naviance
- ▶ Look up your colleges and request transcripts
- ▶ Keep repeating until you’ve added all colleges you are applying to
- ▶ Directions can be found on the worksheet handed out as well as on the BHS website under the senior button.

## Colleges I'm applying to

**It looks like you are not currently able to apply to Common App schools.**  
Match your Common App account to Naviance Student account to get started.

[Match Accounts](#)

[Manage Transcripts](#)

= extended profile available

[+ REQUEST TRANSCRIPTS](#) [REMOVE](#)

College	Type	Deadline	Transcripts	Office materials	Submission Type	Application	
<input type="checkbox"/> Hood College	RD	Regular Decision -	requested	Pending		Submitted	EDIT
<input type="checkbox"/> McGill University	RD	Regular Decision January 15	requested	Pending		Unknown	EDIT
<input type="checkbox"/> Salisbury University	RD	Regular Decision January 15	requested	Pending		Unknown	EDIT

College that I'm attending:



## Deadlines

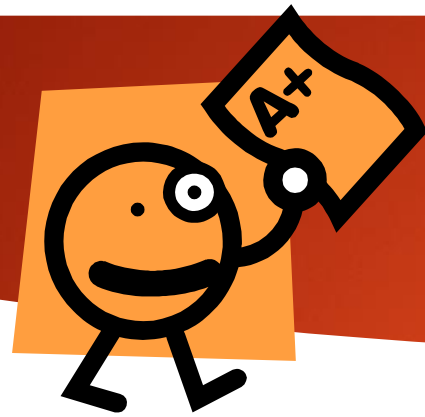
- ▶ **Keep track of your college deadlines (as you are entering them into Naviance).**
- ▶ **Keep in mind that PRIORITY Deadline means that you will be considered for scholarship opportunities if you make the deadline. IE. University of Maryland**



# Requesting a Paper Transcript

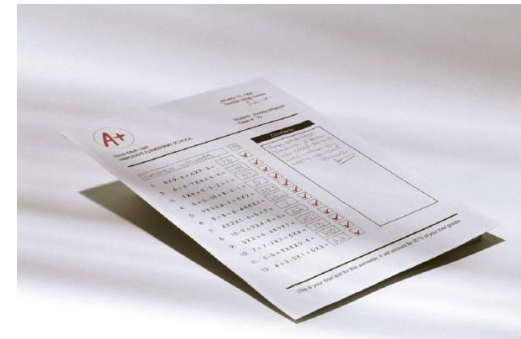
- ▶ If your school has a stamp sign next to it when you add it to naviance, that means you need a paper transcript.
- ▶ Pay \$2.00 for each transcript to Mrs. Wilton for the transcript when you pick it up.
- ▶ You will be notified when your transcript is ready to be picked up
- ▶ \*\* Very few schools want a paper transcript packet





## Transcript Packet Includes:

- ▶ **1. Copy of the student's academic record from grades 9-11 and their senior schedule and Weighted and un-weighted grade point average and class rank**
- ▶ **2. School Profile**
- ▶ **3. School Counselor Letter of Recommendation**
- ▶ **4. Counselor Evaluation form**



The logo consists of a blue speech bubble with the text "achieve more" in white, lowercase letters. The word "achieve" is on the top line and "more" is on the bottom line, with a small trademark symbol (TM) to the right of "more".

achieve  
more™

The logo features the letters "SAT" in a large, grey, serif font. A small registered trademark symbol (®) is located to the upper right of the letter "T".

SAT®

A large, dark red, L-shaped graphic element is positioned on the left side of the slide. It contains the text "You submit your application and your test scores from COLLEGE BOARD and the ACT Organization" in a yellow, sans-serif font. The text is arranged in four lines, with "COLLEGE BOARD" and "ACT Organization" in all caps.

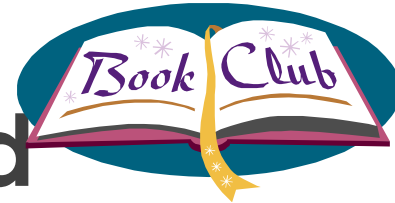
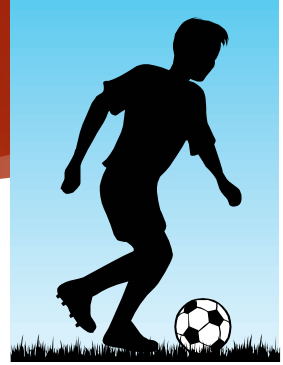
You submit your application and  
your test scores from COLLEGE  
BOARD and the ACT Organization

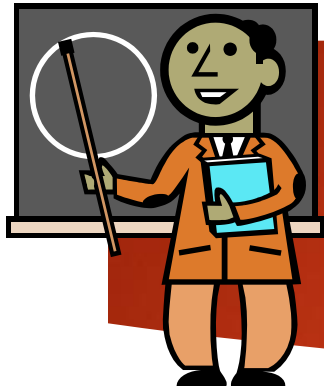




# BRAG SHEET

- ▶ Log into Naviance
- ▶ Go to about me
- ▶ Go to my surveys
- ▶ Select surveys not completed
- ▶ Complete the BRAG SHEET
- ▶ Email or Remind message your counselor that the BRAG SHEET is complete





# Teacher Recommendation Process

- ▶ 1. Request 1-2 teachers who know you well, to write you a recommendation
- ▶ DO NOT PLACE A TEACHER'S NAME ON NAVIANCE AS THE "RECOMMENDER" WITHOUT ASKING THE TEACHER FIRST
- ▶ If you see that, within a reasonable amount of time, the teacher has not completed your letter of recommendation, kindly go talk with them and remind them to do so.



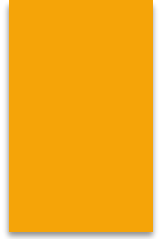
# Mid-Year & End of the Year Reports:

- ▶ Your counselor will complete the mid-year report automatically through Naviance only.
- ▶ If your college/university requires BHS to complete a paper form or send them a copy of your mid-year transcript, see Mrs. Wilton in the Counseling Office





# College Admissions: Key Terms



- ▶ **Admit:** Congratulations, you're in! You've been offered admission to the college you selected.
- ▶ **Deny:** This unfortunately means you weren't accepted.
- ▶ **Waitlist:** You're not in yet, but you've been placed on a waitlist in case an opening becomes available. Waitlists are ranked by priority and there are some years when more competitive schools never draw from theirs.
- ▶ **Deferred Admission:** A student's option to defer an offer of admission for up to two years.
- ▶ **Deferred:** Most likely, if you've been deferred your credentials are in the ballpark for getting accepted. If they weren't, you'd be rejected. However, your application wasn't so far above average that the college wanted to give up a spot in the entering class until they could compare you to the full applicant pool. The percentages vary from college to college.

Points to Consider:

**Common Market: in-state  
tuition for out-of-state schools**

▶ **[www.mhec.state.md.us](http://www.mhec.state.md.us)**



# Scholarships

- ▶ All scholarships (local and national) will be posted on Naviance.
- ▶ Community Foundation Scholarship: March 1-March 31



# Financial Aid



- ▶ **FAFSA is completed online : You may not start this process until after October 1<sup>st</sup>. (Based on estimated income tax)**  
**Our Preferred Deadline: February 15th**
- ▶ **Financial Aid Seminar: October 18<sup>th</sup> at Brunswick at 7:00 pm in the Media Center**
- ▶ **CSS/School Profile:**  
**(usually private colleges)**

# Factors to Consider

- ▶ **Size and qualifications of the applicant pool**
- ▶ **Seeking to admit students with a variety of backgrounds**
- ▶ **Look for special skills/talent**







## Frederick Community College Fair

Wednesday, October 3<sup>rd</sup>

from 6:30pm -8:30pm held at the  
Athletic Center Gymnasium

Baltimore National College Fair:  
held at the Baltimore Convention  
Center

Tuesday, October 30th

9:00 a.m.-12 p.m.

6:30 p.m.-8:30 p.m.

Wednesday, October 31th

9:00 a.m.-11:30 a.m.

# College Fairs

Washington D.C. National  
College Fair:

held at the Walter E.  
Washington  
Convention Center

Saturday, November 3<sup>rd</sup>

2:00pm – 5:00 pm

Ronald Reagan building  
and international  
trade center

Sunday, November 4th

1:00 p.m.- 3:30 p.m.

# Brunswick HS Information

- ▶ [www.BHS.edu](http://www.BHS.edu)
- ▶ CEEB School Code: 210305
- ▶ 101 Cummings Drive Brunswick, MD 21716
- ▶ [Terri.Tuckey@fcps.org](mailto:Terri.Tuckey@fcps.org) (A-F)
- ▶ [Meredith.garris@fcps.org](mailto:Meredith.garris@fcps.org) (G-O)
- ▶ [Rhonda.Starmer@fcps.org](mailto:Rhonda.Starmer@fcps.org) (P-Z)
- ▶ BHS Counseling Office # (240) 236-8550
- ▶ Fax # (240) 236-8602

# REMIND: For important updates

- ▶ GO to [rmd.at/BHSMD2019](http://rmd.at/BHSMD2019)
- ▶ NO SMART PHONE?
  - ▶ TEXT @BHSMD2019 to 81010

# Be In Touch With Your Counselor

- ▶ **Counseling Office hours: 7:15-2:45**
- ▶ **Sign up on counselor's schedule. Request a pass from the registrar/secretary**



# On the lighter side:

- ▶ **Dear Dad,**
  - ▶ **School I\$ really great. I am making lot\$ of friend\$ and \$tudying very hard.**
  - ▶ **With all my \$tuff, I \$imply can't think of anything I need, \$o if you would like, you can ju\$t \$end me a card, a\$ I would love to hear from you.**
- ▶ **Love your \$0n**



▶ **Dear Son,**

▶ I know that astrNOmy, ecoNOmics,  
and oceaNOgraphy are eNOugh to  
keep even an hoNOr student busy.  
Do Not forget that the pursuit of  
kNOwledge is a NOble task, and you  
can never study eNOugh.

▶ **Love Dad**